

**WOMEN'S INTERAGENCY HIV STUDY  
(WIHS)**

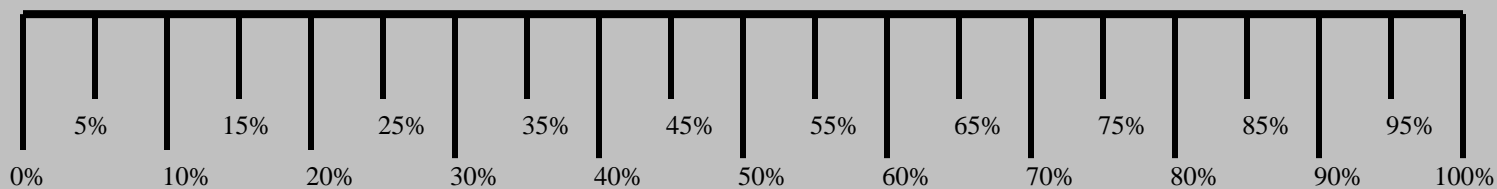
**ENGLISH VERSION  
INTENSIVE PK SUBSTUDY  
RESPONSE CARDS**

# RESPONSE CARD PK02A-6

**How many doses of (DRUG) have you missed in the past 2 weeks?**

- None .....0**
- One .....1**
- Two.....2**
- 3-5 .....3**
- 6-10 .....4**
- 11-20 .....5**
- 21-40 .....6**
- More than 40 .....7**
- All of them .....8**
- DON'T KNOW .....<-8>**

# RESPONSE CARD PK02A-7



None of  
the drug

Half of the  
drug

Three-quarters of  
the drug

All of  
the drug

# **RESPONSE CARD PK02A-8**

**When was the last time you missed a dose of  
(DRUG)?**

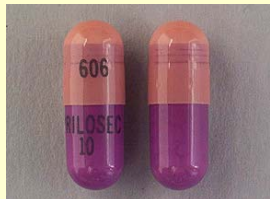
- Today ..... 1**
- Yesterday ..... 2**
- Earlier this week..... 3**
- Last week ..... 4**
- Less than a month ago ..... 5**
- More than a month ago ..... 6**
- Never ..... 7**
- DON'T KNOW..... <-8>**

# PK MEDICATION CARD A: STOMACH MEDICATIONS

In the last 5 days, did you take any of the following medicines for stomach acid, heartburn, etc.?



**Prilosec (omeprazole)**



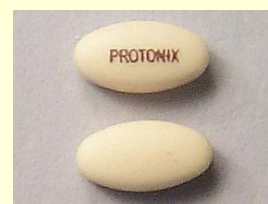
**Prevacid (lansoprazole)**



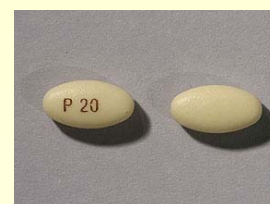
**Nexium (esomeprazole)**



**Aciphex (rabeprazole)**



**Protonix (pantoprazole)**



**Tagamet (cimetidine)**



**Zantac (ranitidine)**



**Pepcid (famotidine)**



**Reglan (metoclopramide)**



**Imodium (loperamide)**



# PK MEDICATION CARD B: SEIZURE MEDICATIONS

In the last 5 days, did you take any medicines for seizures?



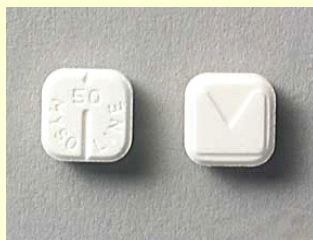
**Tegretol (carbamazepine)**



**Dilantin (phenytoin)**



**Felbatol (felbamate)**



**Mysoline (primidone)**



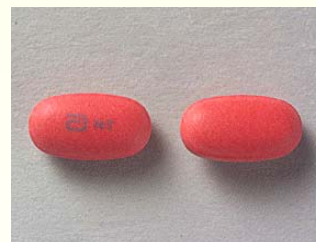
**Topamax (topiramate)**



**Mebaral (mephobarbital)**



**Phenobarbital (Luminal, Solfoton)**



**Depakote (valproate, valproic acid, depakene)**



**Cerebyx (fosphenytoin)**



**Versed (midazolam)**

# PK MEDICATION CARD C: HEART AND BP MEDICATIONS

In the last 5 days, did you take any medicines for blood pressure or your heart?



**Amiodarone (Cordarone, Pacerone)**



**Quinidine (Cardioquin, Quin-tab, Quinadure, Quinaqlute, Qinidex)**



**Verapamil (Calan, Verelan, Covera, Isoptin)**



**Felodipine (Plendil)**



**Diltiazem (Cardizem, Cartia, Dilacor, Tiamate, Tiazac)**



**Nicardipine (Cardene)**



**Nifedipine (Procardia, Adalat)**



**Atenolol (Tenormin)**

# PK MEDICATION CARD D: CHOLESTEROL MEDS

In the last 5 days, did you take any medicines for cholesterol?



**Mevacor (lovastatin)**



**Lipitor (atorvastatin)**



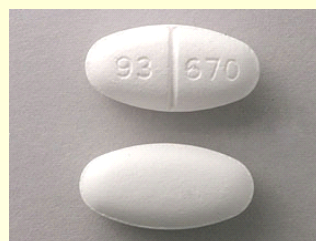
**Zocor (simvastatin)**



**Lescol (fluvastatin)**



**Pravachol (pravastatin)**



**Lopid (gemfibrozil)**



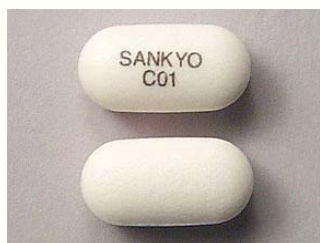
**Tricor (fenofibrate)**



**Colestid (colestipol)**



**Questran (cholestyramine)**



**Welchol (colesevelam)**



**Niaspan (niacin)**



**Crestor (rosuvastatin)**



# PK MEDICATION CARD E: DEPRESSION MEDS

In the last 5 days, did you take any medicines for anxiety, depression, or your nerves?



**Zyprexa (olanzapine)**



**Serzone (nefazodone)**



**Luvox (fluvoxamine)**



**Zoloft (sertraline)**



**Celexa (citalopram)**



**St. John's wort (Amber, goat weed, etc.)**



**Prozac (fluoxetine)**



**Effexor (venlafaxine)**

# PK MEDICATION CARD F: Tamoxifen, Prednisone

In the last 5 days, did you take a medicine to prevent breast cancer, Prednisone or Decadron?



*Tamoxifen*



*Prednisone*



**Decadron**  
*(dexamethasone)*

# PK MEDICATION CARD G: Fentanyl, Methadone

In the last 5 days, did you take Fentanyl or Methadone for pain?



***Fentanyl (Duragesic)***



**Methadone (Dolophine, Methadose)**

# PK MEDICATION CARD H: ANTIBIOTICS & ANTIFUNGALS

In the last 5 days, did you take any of the following antibiotics or antifungals?



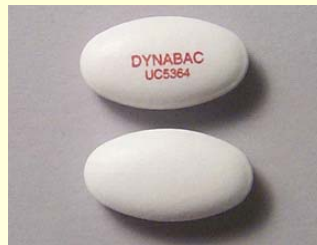
**Erythromycin (E-mycin, Ilosone, Eryc, Erythromycin ethyl succinate or EES)**



**Clarithromycin (Biaxin)**



**Azithromycin (Zithromax)**



**Dirithromycin (Dynabac)**



**Norfloxacin (Noroxin)**



**Ciprofloxacin (Cipro)**



**Fluconazole (Diflucan)**



**Itraconazole (Sporanox)**



**Ketoconazole (Nizoral)**



**Rifampin (Rifadin)**

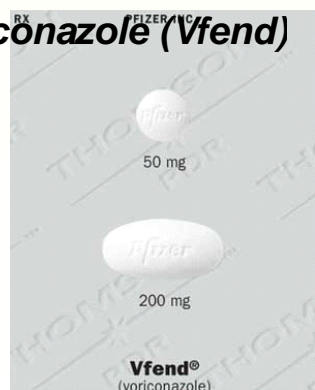


**Rifabutin (Mycobutin)**



**Bactrim (Septra, TMP/SMZ)**

**Voriconazole (Vfend)**



**Mefloquine (Lariam)**

# PK MEDICATION CARD I: Hormones

In the last 5 days, did you take any hormonal contraceptives?



**Ortho-Novum (or other oral contraceptive)**

# RESPONSE CARD PK04

**How many days did you use (the substance in question) since your last core WIHS visit?**

- At least once a day ..... 1**
- Nearly every day .....2**
- 3-4 days a week.....3**
- 1-2 days a week.....4**
- 1-2 times a month.....5**
- None since my last core visit .....6**
- Never .....7**

# RESPONSE CARD PK08

**How often do you eat the  
following foods?**

- Once a month or less.....1**
- 2-3 times a month.....2**
- 1-2 times a week .....3**
- 3-4 times a week .....4**
- 5 or more times a week.....5**