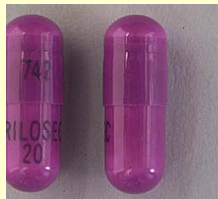
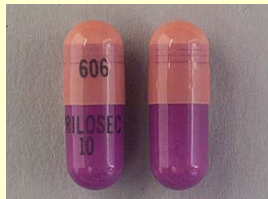


PK MEDICATION CARD A: STOMACH MEDICATIONS

In the last 5 days, did you take any of the following medicines for stomach acid, heartburn, etc.?



Prilosec (omeprazole)



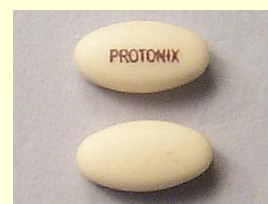
Prevacid (lansoprazole)



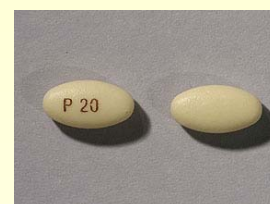
Nexium (esomeprazole)



Aciphex (rabeprazole)



Protonix (pantoprazole)



Tagamet (cimetidine)



Zantac (ranitidine)



Pepcid (famotidine)



Reglan (metoclopramide)



Imodium (loperamide)

